

Powered by



# GP 6120 ▶ 6V 12Ah

GP 6120 is a general purpose battery up to 5 years in standby service or more than 260 cycles at 100% discharge in cycle service. As with all CSB batteries, all are rechargeable, highly efficient, leak proof and maintenance free.



## Specification

Cells Per Unit	3
Voltage Per Unit	6
Capacity	12A h @ 20hr-rate to 1.75V per cell @25 °C(77°F)
Weight	Approx. 1.85 kg(4.08 lbs)
Maximum Discharge Current	150A/180A(5sec)
Internal Resistance	Approx. 8.5 mΩ
Operating Temperature Range	Discharge: -15°C~50°C( 5°F~122°F) Charge: -15°C~40°C( 5°F~104°F) Storage: -15°C~40°C( 5°F~104°F)
Nominal Operating Temperature Range	25°C±3°C(77°F±5°F)
Float Charging Voltage	6.75 to 6.9 VDC/unit Average at 25°C(77°F)
Recommended Maximum Charging Current Limit	3.6A
Equalization and Cycle Service	7.2 to 7.5 VDC/unit Average at 25°C(77°F)
Self Discharge	CSB Batteries can be stored for more than 6 months at 25°C(77°F). Please charge batteries before using. For higher temperatures the time interval will be shorter.
Terminal	F1/F2-Faston Tab187/250
Container Material	ABS(UL 94-HB/File E50263)*Flammability resistance of (UL 94-V0/File E88637) can be available upon request.



MH14533(N)



No.:041005117



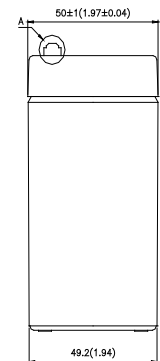
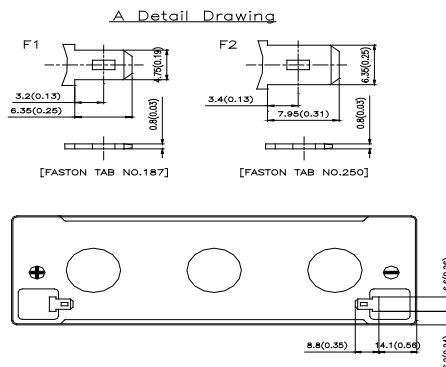
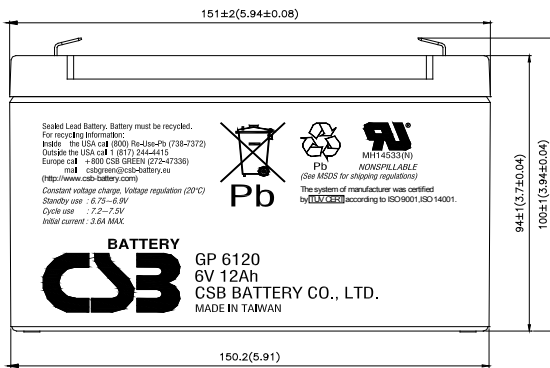
NO.UM 1-12-0045

CSB-manufactured VRLA batteries are UL-recognized components under UL924 and UL1989.

CSB is also certified by ISO 9001 and ISO 14001.

## Dimensions :

Unit: mm (inch)	Overall Height (H)	Container height (h)	Length (L)	Width (W)
	100±1 (3.94±0.04)	94±1 (3.7±0.04)	151±2 (5.94±0.08)	50±1 (1.97±0.04)



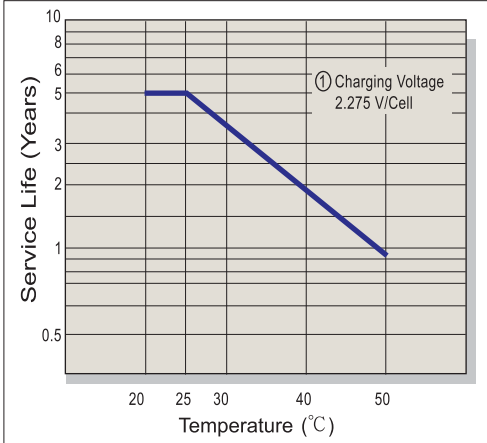
## Constant Current Discharge Characteristics Unit:A (25°C, 77°F)

F.V/Time	5MIN	10MIN	15MIN	30MIN	1HR	2HR	3HR	4HR	5HR	8HR	10HR	20HR
1.60V	51.2	33.2	23.9	13.9	8.14	4.70	3.37	2.70	2.24	1.45	1.19	0.622
1.67V	48.2	32.0	23.6	13.7	8.12	4.62	3.36	2.67	2.21	1.44	1.18	0.618
1.70V	46.3	31.6	23.3	13.6	8.09	4.61	3.32	2.63	2.18	1.43	1.17	0.613
1.75V	43.3	30.0	22.6	13.4	8.03	4.58	3.26	2.58	2.13	1.41	1.16	0.611
1.80V	38.8	28.0	21.5	13.0	7.81	4.48	3.17	2.50	2.06	1.38	1.14	0.594
1.85V	34.2	25.3	19.8	12.3	7.51	4.29	3.03	2.36	1.97	1.32	1.09	0.572

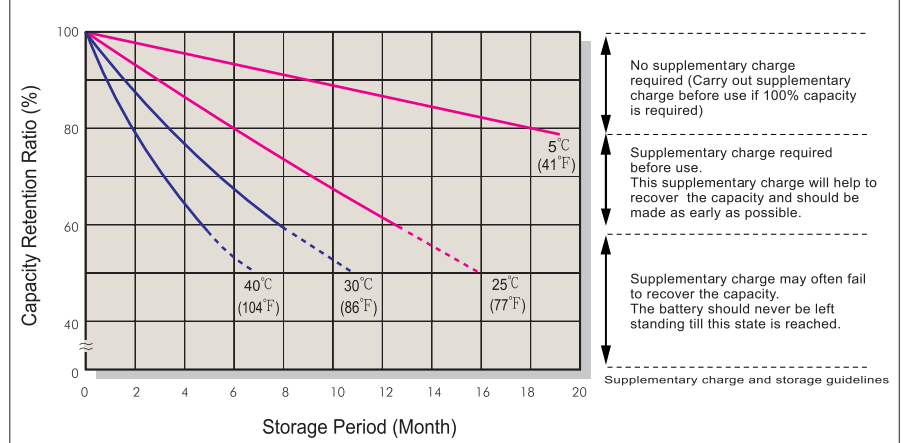
## Constant Power Discharge Characteristics Unit:W (25°C, 77°F)

F.V/Time	5MIN	10MIN	15MIN	30MIN	1HR	2HR	3HR	4HR	5HR	8HR	10HR	20HR
1.60V	269	173	134	79.8	48.9	28.0	19.8	15.3	12.7	8.37	6.91	3.85
1.67V	257	171	132	79.6	48.8	27.8	19.7	15.2	12.6	8.30	6.85	3.82
1.70V	250	168	131	78.8	48.5	27.7	19.5	15.1	12.5	8.25	6.80	3.81
1.75V	231	163	128	78.1	48.1	27.5	19.3	14.9	12.2	8.12	6.69	3.77
1.80V	209	153	121	76.3	47.4	26.8	18.9	14.5	12.0	7.92	6.53	3.71
1.85V	185	140	111	72.2	45.8	26.3	18.1	14.1	11.7	7.74	6.36	3.62

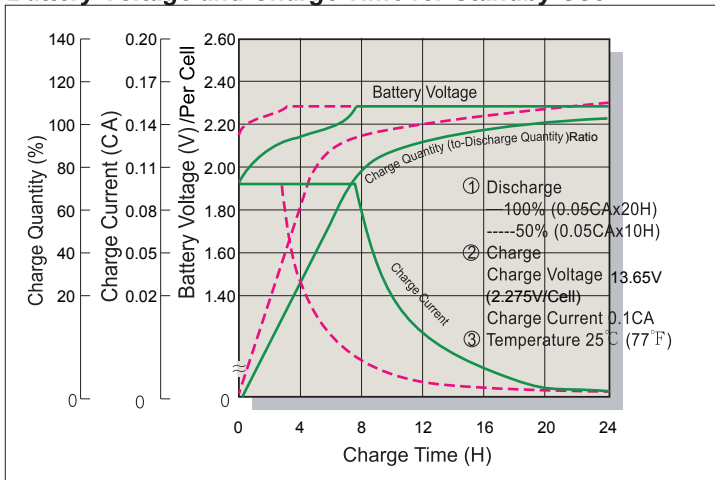
### Trickle (or Float) Service Life



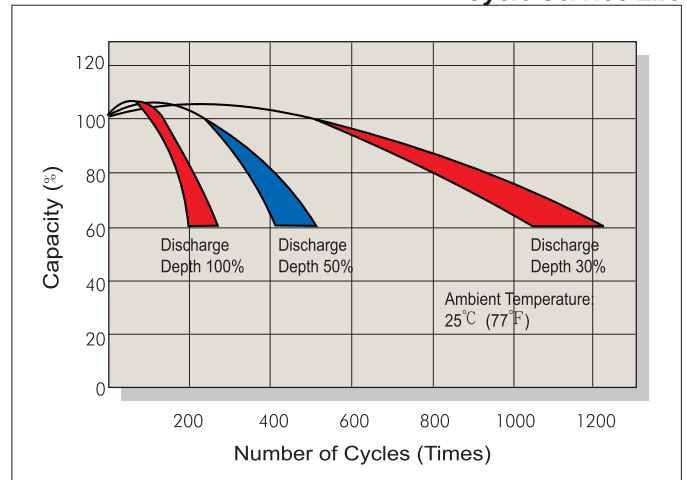
### Capacity Retention Characteristic



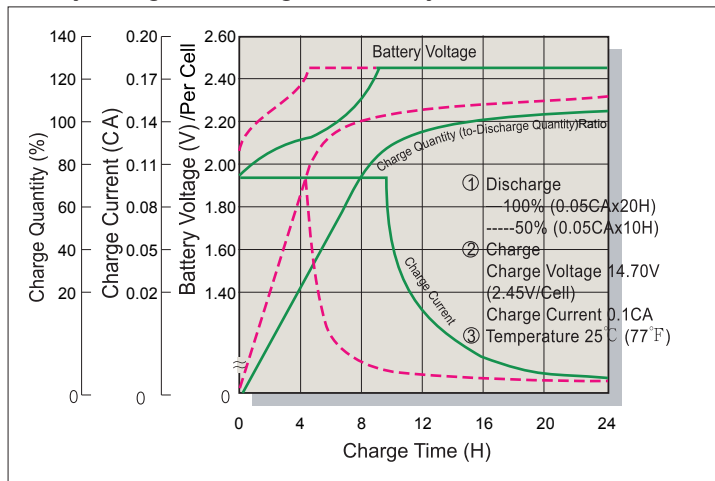
### Battery Voltage and Charge Time for Standby Use



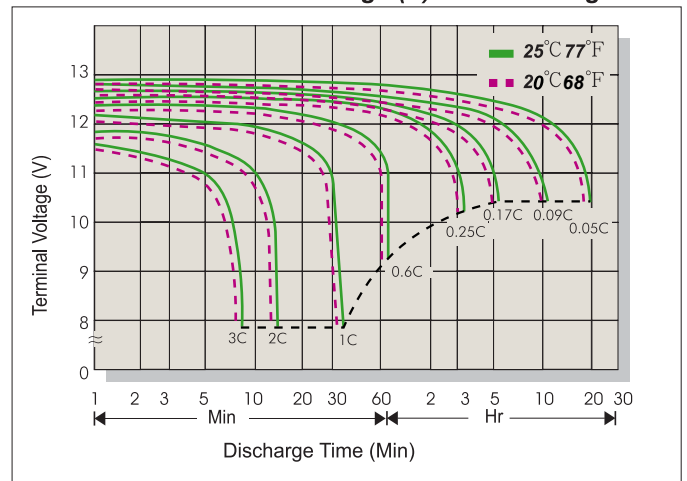
### Cycle Service Life



### Battery Voltage and Charge Time for Cycle Use



### Terminal Voltage (V) and Discharge Time



### Charging Procedures

Application	Charge Voltage(V/Cell)			Max.Charge Current
	Temperature	Set Point	Allowable Range	
Cycle Use	25°C (77°F)	2.45	2.40~2.50	0.3C
Standby	25°C (77°F)	2.275	2.25~2.30	

### Discharge Current VS. Discharge Voltage

Final Discharge Voltage V/Cell	1.75	1.70	1.60	1.30
Discharge Current(A)	0.2C>(A)	0.2C<(A)<0.5C	0.5C<(A)<1.0C	(A)>1.0C

Sales Office URL: [WWW.CSB-BATTERY.COM](http://WWW.CSB-BATTERY.COM)

#### Distribution Deutschland ZDIS GmbH

Tel : +49 (0)8638-981 606-0  
 Fax : +49 (0)8638-981 606-9  
 mail : [vertrieb@zdis.de](mailto:vertrieb@zdis.de)

#### BEIJING OFFICE. (CHINA)

CSB BATTERY TECHNOLOGIES (BEIJING) CO., LTD.  
 Tel : +86-10-59621300/1301/1302/1303  
 Fax : +86-10-59621304  
 mail : [chinasls@csb-battery.com](mailto:chinasls@csb-battery.com)

#### AMERICA HQ

CSB BATTERY TECHNOLOGIES INC. (U.S.A)  
 Tel : +1-817-244-7777/1-(800)3-CSB-USA(272872)  
 Fax : +1-817-244-4445  
 mail : [csb@csb-battery.com](mailto:csb@csb-battery.com)

#### SHANGHAI OFFICE. (CHINA)

CSB BATTERY LOGISTIC (SHANGHAI) CO., LTD.  
 Tel : +86-21-5046-1622/5046-0833  
 Fax : +86-21-5064-3314  
 mail : [chinasls@csb-battery.com](mailto:chinasls@csb-battery.com)

#### EUROPE HQ

CSB Battery Europe BV.  
 Tel : +31(0)-180-418-140  
 Fax : +886-2-2555-3300  
 mail : [eurosales@csb-battery.eu](mailto:eurosales@csb-battery.eu)

#### SHENZHEN OFFICE. (CHINA)

CSB BATTERY LOGISTIC (SHANGHAI) CO., LTD.  
 Tel : +86-755-8831-6488/6396/6356  
 Fax : +86-755-8831-6548  
 mail : [she@csb-battery.com.cn](mailto:she@csb-battery.com.cn)